

INCLINATOR

COMPANY OF AMERICA

HARRISBURG, PA

ORDER REFERENCE

PROJECT: TYPICAL #500
ELEVETTE - CABLE DRUM
MACHINE ROOM IN ATTIC

GENERAL CONTRACTOR: -

EQUIPMENT INSTALLED BY: -

SPECIFICATIONS

MODEL: CABLE "DRUM"- 200

LANDINGS: 2

CODE(S): 4

CAPACITY: 500#

SPEED: AT 30 F.P.M.±4

SUSPENSION MEANS: 2 WIRE ROPES 5,600 LBS. TRACTION
STL. STEEL 1/4" x 8 x 19 IWRC

CAR CONSTRUCTION: 3/4" HARDWOOD VENEER

NOTE: ALL MANUFACTURER SUPPLIED CAR AND EQUIPMENT OPTIONS ARE NOTED ON THE CONFIRMING ORDER SHEET.

DISCLAIMER: ONCE DRAWINGS HAVE BEEN APPROVED, SIGNED AND WITHIN 5 DAYS OF PRODUCTION, THE CUSTOMER WILL BEAR ALL RESPONSIBILITY AND LIABILITY OF FINISHED UNIT.

PLEASE REFER ANY QUESTION TO YOUR SALES REPRESENTATIVE

☐ APPROVED

☐ UNAPPROVED

SIGNATURE

DATE

DWG VIEW

COVER SHEET

PART NUMBER

80205322

REV.DATE



DRAWING TITLE

CABLE DRUM IN ATTIC

DRAWING NO.

TYPICAL

PAGE:
1/4

DRAWN BY:
J.PETTYJOHN

DWG. DATE
03/31/2008

JOB OR APP.#
#500

DEALER P.O.#
-

DWG. SCALE
1:24

REV.LEVEL(1-3)
-

NOTE:
G.C. TO BUILD OUT HOISTWAY
AS NEEDED TO MAINTAIN 3"
REQUIRED FOR STABILIZER.

NOTE:
ALL HOISTWAY
CONSTRUCTION MUST COMPLY
WITH NATIONAL, STATE, AND
LOCAL CODES. HOISTWAY
MUST BE PLUMB AND
STRAIGHT FROM TOP
TO BOTTOM WITH NO
PROJECTIONS INTO THE
HOISTWAY.

NOTE:
2" RUNNING CLEARANCE
MUST BE REDUCED TO
1/2" MIN./1 1/2" MAX.
AT THE LANDING
LEVELS.

**NOTICE TO ELECTRICAL
CONTRACTOR:**

-ALL ELECTRICAL WIRING
MUST BE DONE BY A
JOURNEYMAN MECHANIC
AND MUST MEET ALL
NATIONAL, STATE, AND
LOCAL CODES.

-BRING (3) #10 W/GND
FROM RESIDENCE INCOMING
POWER PANEL 30AMP
BREAKER(240V, NEUTRAL,
GROUND) TO THE MACHINE
ROOM.

-BRING (2) #12 W/GND
FROM RESIDENCE INCOMING
POWER PANEL 20AMP GFI
BREAKER(120V, NEUTRAL,
GROUND) TO THE MACHINE
ROOM.

-REQUIRED LOW VOLTAGE
WIRING IS SUPPLIED BY
MANUFACTURER. ALL
EXTENSIONS ADDITIONS,
ETC. SHALL BE DONE WITH
THE SAME SIZE

AND TYPE OF WIRE AS
ORIGINALLY SUPPLIED BY
THE MANUFACTURER.

-A TELEPHONE LINE
SHALL BE SUPPLIED TO
THE MACHINE ROOM AND
SHALL BE CONNECTED TO A
24 HOUR CENTRAL
EXCHANGE.

-ALL MEANS FOR ACCESS
TO EQUIPMENT SHALL BE
PROVIDED WITH A LOCK.
ALL SHAFT DOORS MUST BE
INTERLOCKED.

2 LANDING CONTROLLER
(18"Wx6"Dx18"H)
LOCATED TO MEET N.E.C.
AND/OR LOCAL CODES

120v. 20 AMP
SERVICE
OUTLET w.G.F.I.
BY OTHERS

PHONE SERVICE
BY OTHERS

HOISTING MACHINE
(24"Wx30"Dx20"H)

240v. 1PH SLACK CABLE
DISCONNECT SWITCH
TO BE FIELD LOCATED

SEE DETAIL
"RAIL"

42" HANDRAIL

6 3/4" R.C.

46" FIN.
HATCH

36" CAR

3 1/4" R.C.

2" R.C.

STABILIZING ROLLERS
& 1/4"x2"x2" ANGLE

48" CAR

52" FIN. HATCH

ELEVETTE
CABLE DRUM - 200

7'H-OVERALL
80"H-CLEAR ID

CODE(S) 4

2'-10"
MIN.
DRUM TO
SHEAVE

NOTE: DISTANCE
FROM DRUM TO
SHEAVE WILL
VARY DEPENDANT
UPON TRAVEL
DISTANCE

10 POST GATE

36" DOOR

30 1/4" CLEAR

DOOR INTERLOCK

CALL STATION
42" C ABOVE
FINISHED FLOOR

DWG VIEW

HOISTWAY LAYOUT

PART NUMBER

80205322

REV. DATE

-

-

-

INCLINATOR
COMPANY OF AMERICA
HARRISBURG, PA

DRAWING TITLE

CABLE DRUM IN ATTIC

DRAWING NO.

TYPICAL

PAGE:
2/4

DRAWN BY:
J. PETTYJOHN

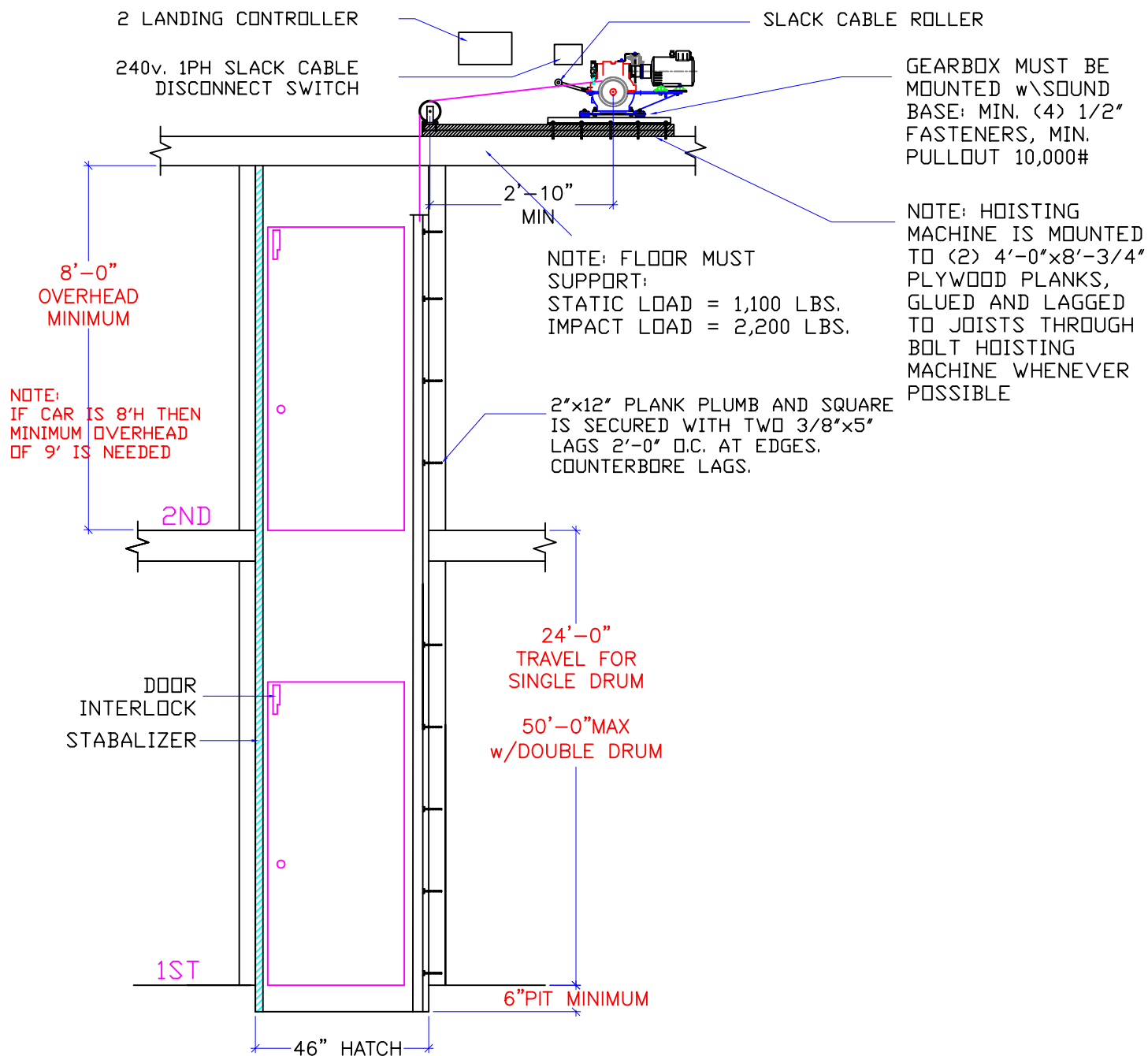
DWG. DATE
03/31/2008

JOB OR APP.#
#500

DEALER P.O.#
-

DWG. SCALE
1:24

REV. LEVEL(1-3)
-



DWG VIEW

SECTION A-A

PART NUMBER

80205322

REV.DATE

-

-

-

DRAWING TITLE

CABLE DRUM IN ATTIC

DRAWING NO.

TYPICAL

INCLINATOR
COMPANY OF AMERICA
HARRISBURG, PA

PAGE:
3/4

DRAWN BY:
J.PETTYJOHN

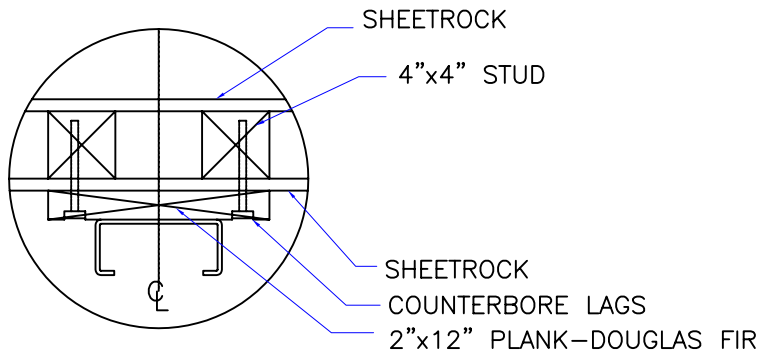
DWG. DATE
03/31/2008

JOB OR APP.#
#500

DEALER P.O.#
-

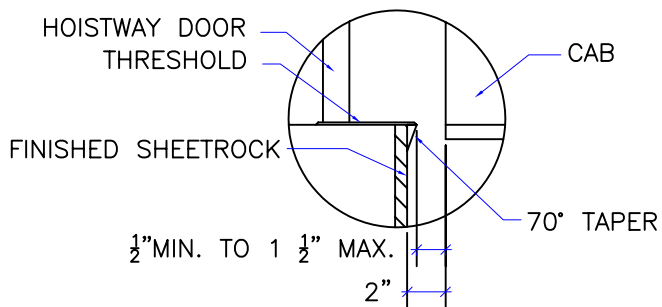
DWG. SCALE
1:24

REV.LEVEL(1-3)
-



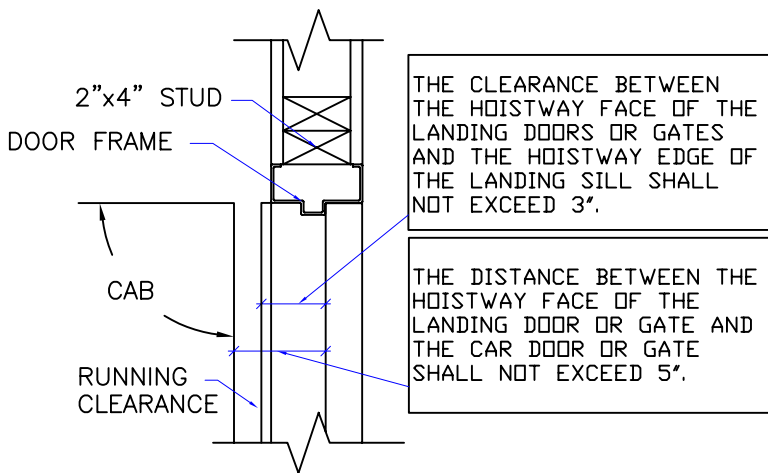
NOTE:
WHEN STUD AND SHEETROCK CONSTRUCTION
IS USED ON THE GUIDE RAIL SUPPORT WALL
4"x4" STUDDING IS NEEDED BEHIND THE
2"x12" PLANK.

RAIL DETAIL



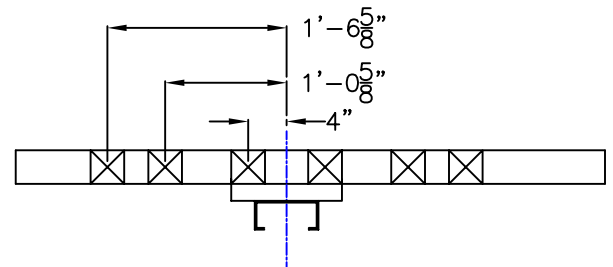
DOOR SILLS TO BE INSTALLED BY G.C.
AFTER LIFT SUPPLIER HAS INSTALLED
A RUNNING PLATFORM. SILL TO BE
BROUGHT OUT TO NOT LESS THAN 1/2"
AND NOT MORE THAN 1 1/2" TO THE
RUNNING PLATFORM.

SILL DETAIL



DOOR FRAME DETAIL

MIRROR OPPOSITE SIDE



STUD LOCATIONS FOR THRU THE WALL SHEAVES
(IF APPLIES)

1. REACTIONS ON ALL SHEAVES AND MOUNTINGS
STATIC = 1,100 LBS.
IMPACT = 2,200 LBS.
2. FASTENING OF HOISTING MACHINE TO CONCRETE
1/2 "X 3" HILTI BOLTS (OR EQUAL)
3. RAIL FASTENING TO 2"x12" PLANK
#14 x 1 3/4" TYPE A S.M.S. RAIL IS PRE-
DRILLED AT FACTORY.
4. BOLT FASTENING OF CAR TO TROLLEY
1/2" - 13 x 4" SOCKET HD CAP SCREWS

TECHNICAL DATA

DWG VIEW

DETAILS, DATA, CODES

PART NUMBER

80205322

REV.DATE

-

-

-

DRAWING TITLE

CABLE DRUM IN ATTIC

DRAWING NO.

TYPICAL

PAGE:
4/4

DRAWN BY:
J.PETTYJOHN

DWG. DATE
03/31/2008

JOB OR APP.#
#500

DEALER P.O.#
-

DWG. SCALE
1:24

REV.LEVEL(1-3)
-

INCLINATOR
COMPANY OF AMERICA
HARRISBURG, PA